

FOR IMMEDIATE RELEASE:

PREVI Isola Wins Prestigious 2010 Gold Medical Design Excellence Award (MDEA) - developed and manufactured by Invetech

Invetech team scores two consecutive MDEA awards following TearLab's win in 2009

(Melbourne, Australia.– June 10, 2010) PREVI™ Isola, a breakthrough medical instrument that delivers a faster, more precise and cost-efficient way to process patient specimens, has been awarded the prestigious 2010 Gold Medical Design Excellence Award. The MDEA award recognizes advances in the design of medical products that improve healthcare delivery and change traditional medical practices.

bioMérieux, a world leader in *in vitro* diagnostics, partnered with LBT Innovations Ltd, the technology's developer, and Invetech, the device's designer and manufacturer, to create PREVI Isola.

This breakthrough technology will greatly improve the efficiency of microbiology labs all over the world by replacing the current time-consuming, costly, manual process of agar plate streaking with a fully automated approach - using a patented applicator to maximize microorganism colony isolation, eliminate cross-contamination risks, and standardize plate inoculation with better traceability.

Based on an LBT Innovations invention by Australian medical scientist John Glasson and engineer Lachlan Smith, PREVI Isola is able to process 180 plates per hour, shortening time to result, saving technicians' time and greatly improving laboratory workflow.

"bioMérieux is proud to see PREVI Isola recognized by this prestigious award," said Stéphane Bancel, chief executive officer of bioMérieux, "I would like to thank our partners at LBT Innovations and Invetech and our teams at bioMérieux for making it possible for us to bring this visionary solution to our customers. As the world leader in microbiology, bioMérieux is driving microbiology lab automation, with new systems and IT solutions for rapid time to results, which will result in rapid time to therapy for patients. Our goal is to transform microbiology to better serve our customers, clinicians and their patients."

LBT Innovations' chief executive officer Lusía Guthrie said the award was a fitting recognition for the technology, which has substantially improved scientific workplaces all over the world.

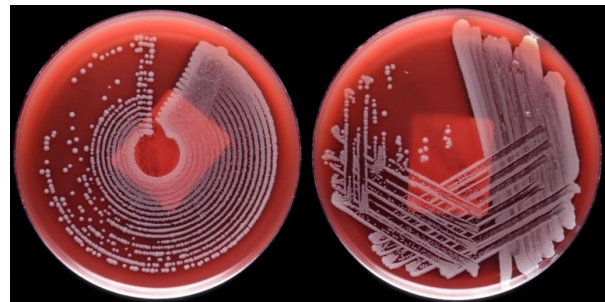
"It is imperative that microbiology laboratories meet the changing needs of growing populations and growing demand," she said. "PREVI™ Isola capitalises on the estimated 20 per cent workload increase demanded of modern laboratories."

The partnership of bioMérieux, LBT Innovations and Invetech was instrumental in advancing PREVI Isola from an initial concept to an award-winning product that will forever change the microbiology lab automation landscape.

"Collaborating with global leaders and visionary enterprises such as bioMérieux and LBT Innovations to develop world-first products like PREVI Isola is what truly energises Invetech," says Dr Fred Davis, president of Invetech.



The PREVI Isola automates microbiological processing tasks which have been performed manually for the last 100 years.



PREVI™ Isola produces a uniform streaking pattern (left) resulting in a larger sample of bacterial colonies on the agar plate compared with the manual loop-to-plate method (right).

“It is very rewarding to help develop and manufacture breakthrough products like this that greatly improve the lives of people all over the world enabling faster and more sensitive disease diagnosis.”

Agar plate inoculation is a repetitive, manually intensive microbiology process that has not changed significantly in over 100 years. Plates are traditionally streaked by hand in a time-consuming and costly process that is prone to human error and variation between samples. PREVI Isola produces a uniform streaking pattern as well as a larger more repeatable sample of bacterial colonies. It dispenses sample on to an agar plate with a pipettor guided by an ultrasonic sensor and a machine vision system. Sample is then automatically streaked using a novel disposable that has been designed to maximise streaking.

Typically located in large hospitals and pathology companies, PREVI Isola will enable laboratories worldwide to increase their responsiveness, throughput and effectiveness of disease detection, improve staff retention by eliminating tedious and repetitive core tasks, and create significant cost savings. Launched in 2008 at the European Congress of Clinical Microbiology & Infectious Diseases (ECCMID), PREVI Isola systems are now installed in laboratories in the U.S., Europe, Asia and Latin America.

The MDEA Award will be officially presented in a ceremony at the Medical Design & Manufacturing East 2010 Conference and Exposition in New York in June. Representatives from bioMérieux, LBT Innovations, and Invetech will be present to receive the award.

###

Invetech, 495 Blackburn Road, Mt Waverley (Melbourne) Vic 3149, Australia.
Phone +613 9211 7782, Fax +613 9211 7703.

About Invetech:

Invetech has been creating breakthrough products and custom automation systems for more than 30 years. With more than 200 staff, and experience drawn from over 5,000 projects, Invetech delivers product design and development, contract manufacturing and custom automation services to a range of global market sectors including diagnostics, life sciences, medical devices, cleantech, industrial and consumer products. Operating out of locations in North America, Europe and Asia Pacific, our clients range from start-ups to multi-nationals. For more information: www.invetech.com.au

About bioMérieux:

Advancing diagnostics to improve public health A world leader in the field of in vitro diagnostics for over 45 years, bioMérieux is present in more than 150 countries through 39 subsidiaries and a large network of distributors. In 2009, revenues reached €1.223 billion with 85% of sales outside of France. bioMérieux provides diagnostic solutions (reagents, instruments, software) which determine the source of disease and contamination to improve patient health and ensure consumer safety. Our products are used for diagnosing infectious diseases and providing high medical value results for cancer screening and monitoring and cardiovascular emergencies. They are also used for detecting microorganisms in agri-food, pharmaceutical and cosmetic products. bioMérieux is listed on the NYSE Euronext Paris market (Symbol: BIM – ISIN: FR0010096479). For more information: www.biomerieux.com

About LBT Innovations

LBT Innovations (ASX: LBT) is changing the way microbiology labs around the world operate. Based in Adelaide South Australia, its lead product is the PREVI™ Isola system, which incorporates LBT's unique Australian designed MicroStreak® technology for the automation of plate streaking and processing. This means quicker and more accurate test results and better patient outcomes. PREVI™ Isola is being sold around the world by LBT Innovations' international partner bioMérieux. LBT Innovations plans to commercialize further products that substantially improve the efficiency and accuracy of pathology testing in laboratories worldwide. For more information: www.lbtinnovations.com

About the Medical Design Excellence Awards

The Medical Design Excellence Awards competition is organized and presented by Canon Communications LLC (Los Angeles) and is the only awards program that exclusively recognizes contributions and advances in the design of medical products. Entries are evaluated on the basis of their design and engineering features, including innovative use of materials, user-related functions that improve healthcare delivery and change traditional medical attitudes or practices, features that provide enhanced benefits to the patient, and the ability of the product development team to overcome design and engineering challenges so that the product meets its clinical objectives. A comprehensive review of the entries was performed by an impartial, multidisciplinary panel of third-party jurors with expertise in biomedical engineering, human factors, industrial design, medicine, and diagnostics. For more information: www.MDEAwards.com

CONTACTS:

Roger Langsdon, Invetech
+61 417 376 433
Roger.Langsdon@invetech.com.au

Tom Gable Gable PR, San Diego (Office: +1 619-284-1714)
Cell: +1 619-251-3881
tom@gablepr.com